

How much more anatomy can be seen on an abdomen when the SID is increased

- Classic distances are (were) 40" or 44" and 72."
- Patients are much larger now.
- Maximum distances available:
 - 47" using fluoro table bucky
 - 53" using movable table bucky
 - 72" using upright bucky

ABDOMEN

000

09

Unspecified CR: ABDOMEN

8/20/05
8:32:55 AM

40" SID

PI

BI

R
DB
C

0279
0710
Pinto #30000000

09

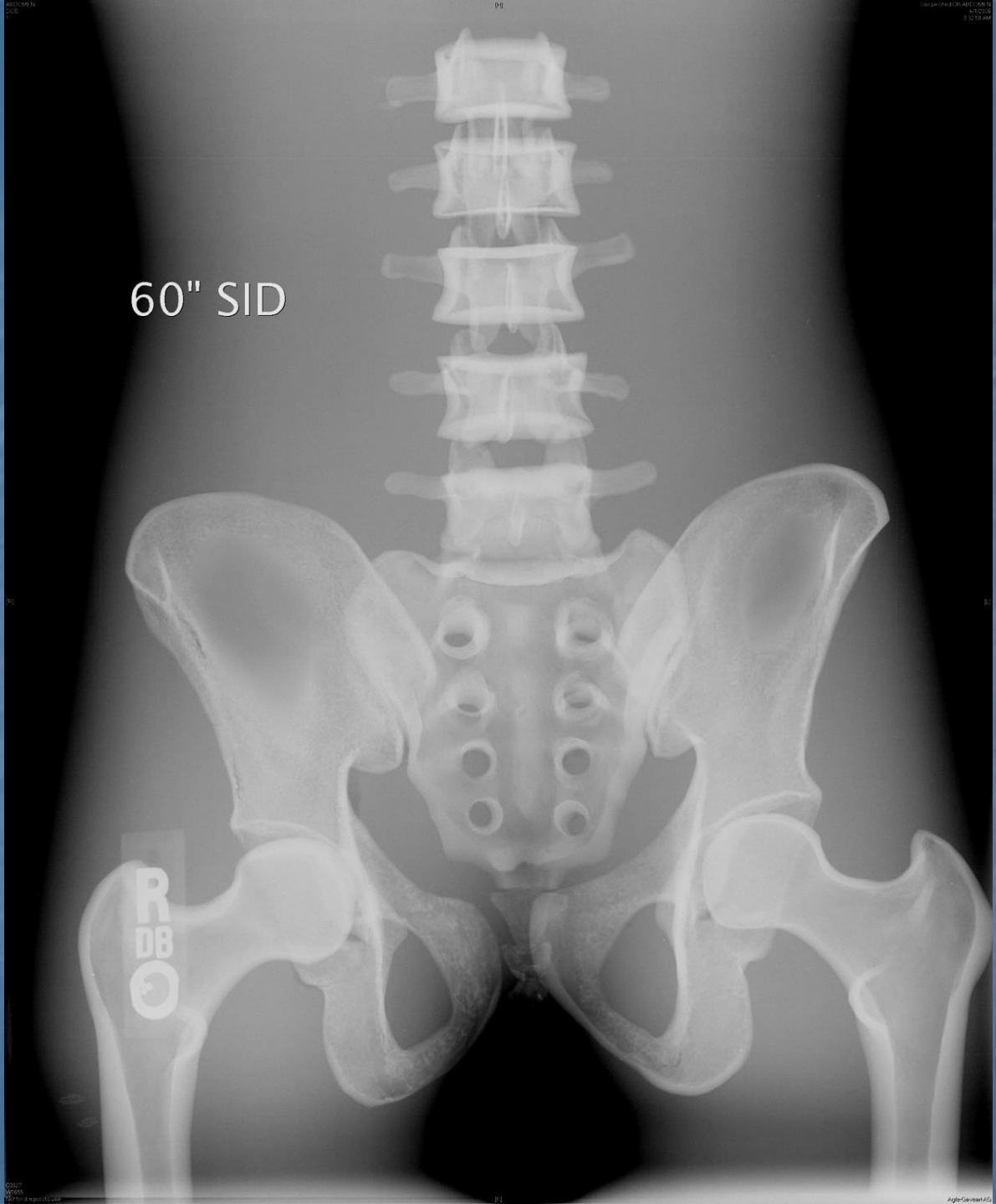
#00000000000000000000

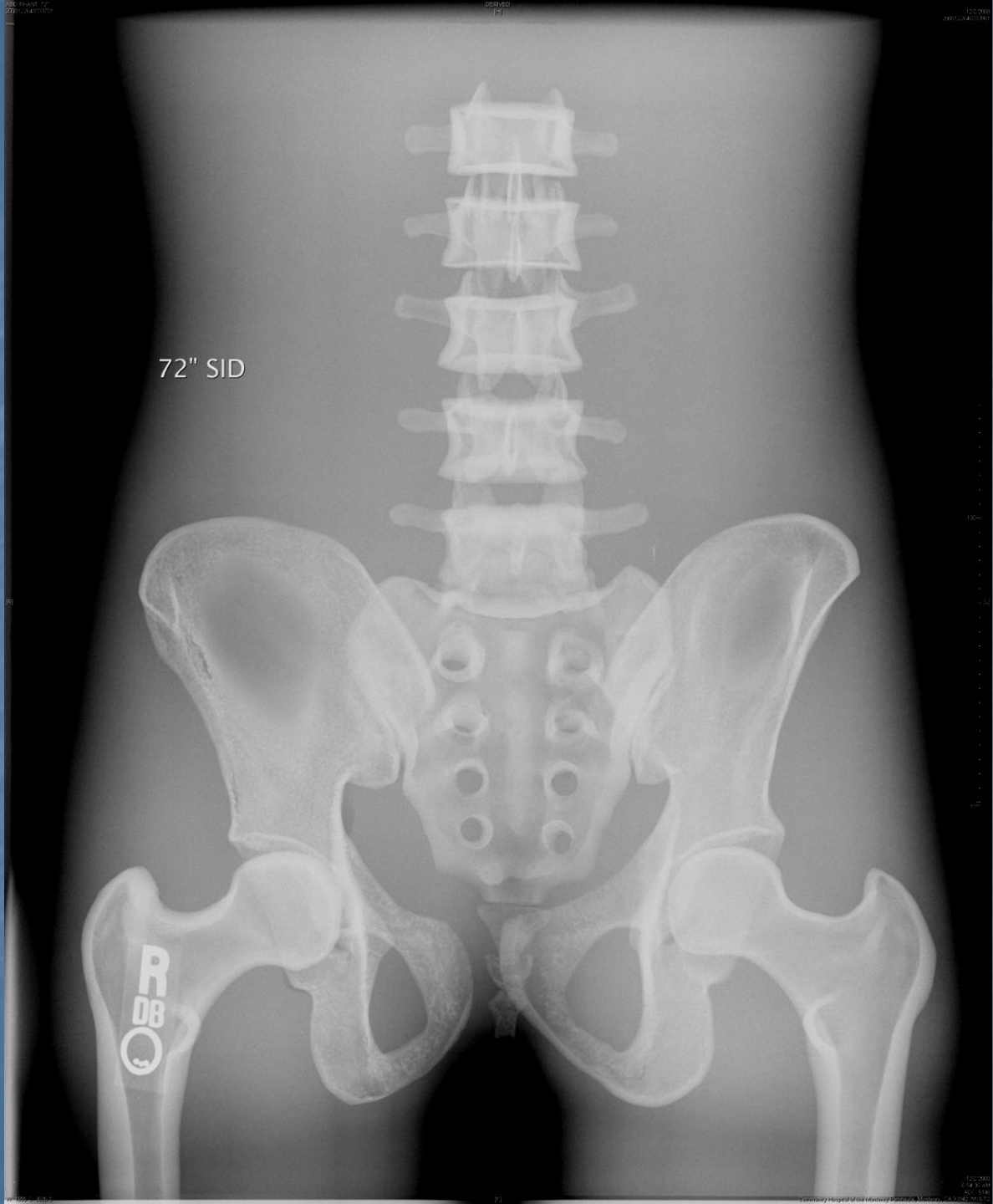
50" SID

R
DB
C

60" SID

R
DB
C





72" SID

R
DB
3

